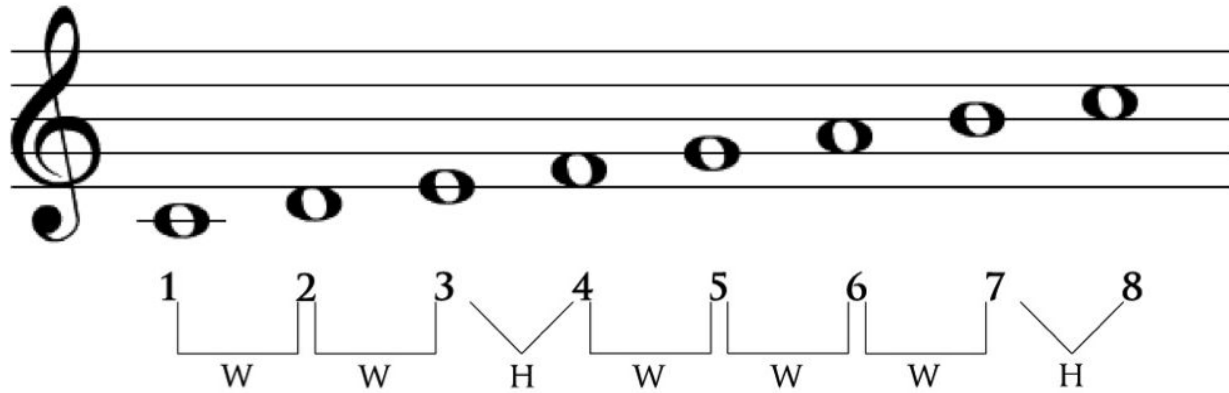


Major Scale Theory

LEARNING TARGETS:

1. I can **analyze** the major scale formula using intervals
2. I can **identify** and **perform** a major scale using scale degree numbers
3. I can **identify** and **perform** a major scale using solfege syllables

Major Scale Formula:



1	2	3	4	5	6	7	8
C							C
C#							C#

Scale Degree Numbers:

1

2

3

4

5

6

7

8

Solfege:

Do

Re

Mi

Fa

Sol

La

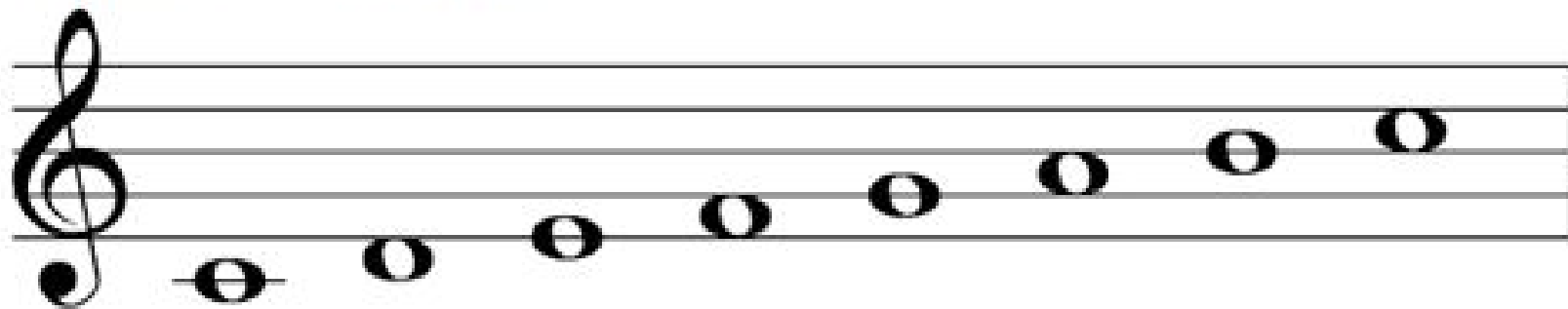
Ti

Do



Scale degrees, intervals, and solfege syllables:

W= Whole step H= Half step



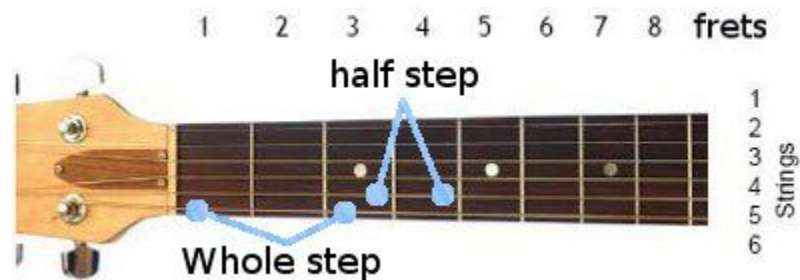
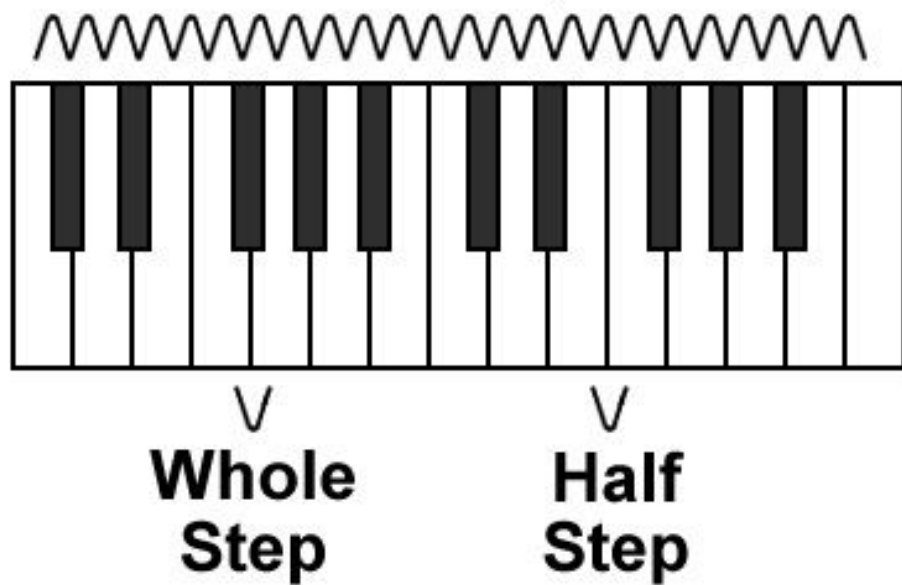
Scale degree #: 1 2 3 4 5 6 7 8

Interval: W W H W W W H

Solfege: Do Re Mi Fa Sol La Ti Do



Half Steps



Concert Pitch Transpositions

LEARNING TARGETS:

1. I can explain the difference between concert pitch and written pitch
2. I can transpose a concert key pitch for Bb, F, and Eb instruments by analyzing the transposition formulas

Concert Pitch Transpositions

Instrument keys:

Concert Pitch/C Instruments:	Bb Instruments:	F Instruments:	Eb Instruments:
<ul style="list-style-type: none"> - Flute - Piccolo - Trombone - Oboe - Bassoon - Tuba - Pitched percussion 	<ul style="list-style-type: none"> - Clarinet - Trumpet - Tenor saxophone - Soprano saxophone - Bass clarinet - T.C. Baritone or Euphonium 	<ul style="list-style-type: none"> - French horn 	<ul style="list-style-type: none"> - Alto saxophone - Bari saxophone - Alto clarinet

TO FIND THEIR NOTES TO PLAY IN UNISON:

Bb instruments count to the second scale degree of the concert pitch note

F instruments count to the fifth scale degree of the concert pitch note

Eb instruments count to the sixth scale degrees of the concert pitch note

Exercise 2: Transposition Exercise

CONCERT PITCH	Bb Instruments	F Instruments	Eb Instruments
C			

Directions: Using the

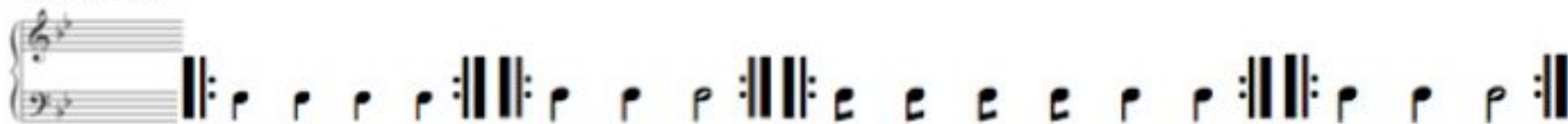
Major Scale Tonality in Music

LEARNING TARGETS:

1. I can use one major scale element (ex: solfege) to figure out another major scale element (ex: concert pitch transposition)
2. I can **analyze** scale degree elements (ex: solfege, scale degree numbers, etc.) within the context of real music
3. I can **perform** my E major and Ab major scales without reading musical notation.

Exercise 3: Mystery Song Puzzle

CONCERT
KEY
SIGNATURE:



Scale degree	1		3	1
solfege		re	mi	
Concert pitch	Bb		D	
Bb pitch		D		
Eb pitch		A		
F pitch	F	G		

	4	5
mi		
	F	
		D
A		

5			4		
	la			mi	
		F			Bb
G			F		
			C	B	G
		C			

		1
	sol	
Bb		
		C
F		

Directions: Use your knowledge of scale degrees, solfege syllables, and concert pitch transpositions to fill in the blanks and complete the chart to reveal the notes of the mystery song in four different keys!